
WCADC APRIL 2023 NEWSLETTER

A MONTH OF GROWTH

This month WCADC celebrates the theme of **growth**. Growth can appear in many forms including personal and character growth, nature blooming, expanding one's knowledge, and changing size. Artists depict this theme in their work constantly, whether it is to show the growth of a loved one, the changing times, or flowers blooming. At WCADC, we believe growth is an all-encompassing subject that allows for creativity, diversity, and beauty. This month's newsletter will feature this theme through famous artists' views on growth and our member's new pieces.



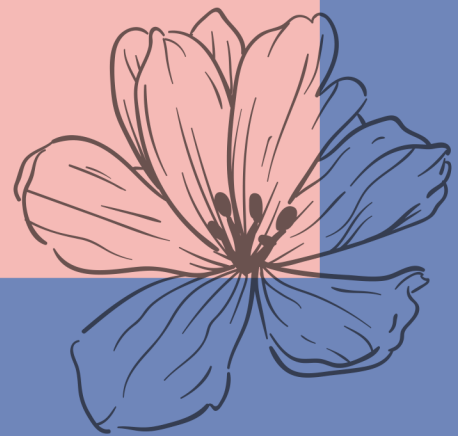
Welcome, Spring



In this Month's Issue



- Growth
- What are WCADC Members Up To?
- Our Voices Carry Weight
- Calls for Art
- Important Announcements



GROWTH IN THE ARTS

Nature



Foliage, Fruit and
Flowers of a Rose
-Marianne North
(1830-1890)



Sour Cherry
-Maria Sibylla
Merian (1647-1717)

WCADC Member's Work

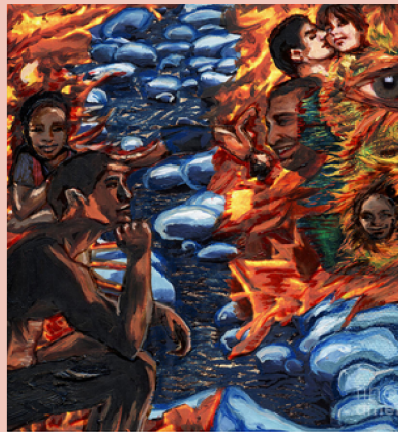


Orchid, Fig. 2
-Lisa Grand
Murphy

Human Life



Sour Cherry
-Maria Sibylla Merian
(1647-1717)



Mitosis
Microbiology
Landscapes Series
-Emily McLaughlin



WHAT ARE WCADC MEMBERS UP TO?

Artist: **Ghia_artdesign**
Title: "Flowers for her hair"



Artist: **Lisa Grand Murphy**
Title: "Moody Blues"



Artist: **Prudence Bonds**
Title: "Self"



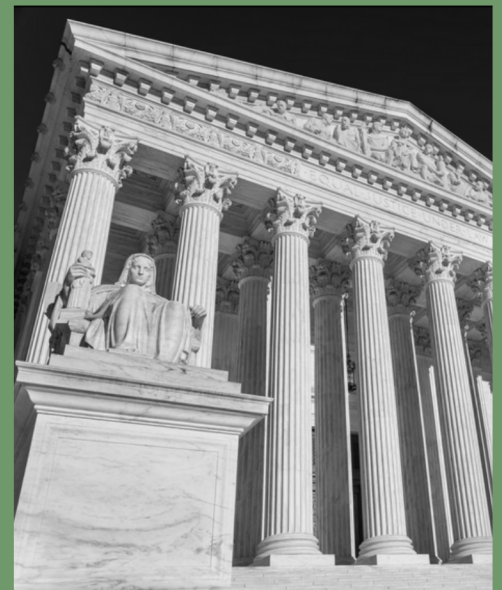
Artist: **Barbara Joann Combs**
Title: "Blue Jazz IV"



Artist: **Deborah Walmer**
Title: "WIP"



Artist: **Jen Packard**
Title: Justice



OUR VOICES CARRY WEIGHT



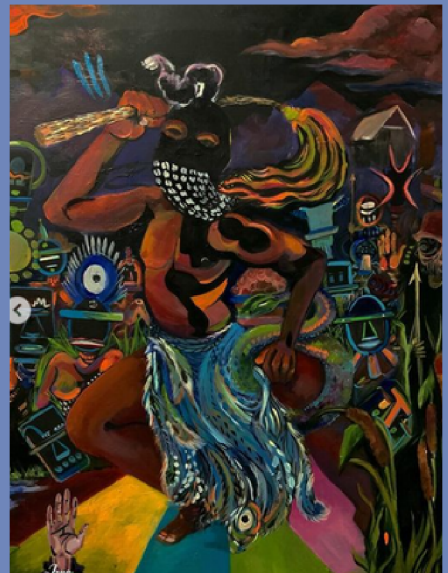
On March 18th, WCADC's exhibit, **Our Voices Carry Weight**, opened to the public and featured a diverse group of talented female artists. Here are a few pictures of some of the featured pieces



Artist: [@mohtownworks](#)



Artist:
[@sarah.schneiderman](#)



Artist: [@jonamonet](#)



Artist: [@noellerx](#)

Exhibit
ends on
04/23/23!
Check it
out while
you can!

LOCATION:
Activity Center at
Bohrer Park
506 S Frederick Ave,
Gaithersburg, MD 20877



CALLS FOR ART



**WHAT DO YOU SEE
WHEN YOU LOOK AT ME?**

WCADC CALL FOR ART


Exhibit
July 7 - 30, 2023

**Popcorn Gallery
Glen Echo Park**
7300 MacArthur Blvd
Glen Echo, MD 20812

Juror
Fabiola R. Delgado

Entry Deadline
April 30, 2023
Members: \$20
Non-Members: \$30

**Selection
Announcement**
May 14, 2023



Artwork by Tronja Angiero

Self-portraits have been used to exhibit the beauty of life; tell a story of a particular place and time; and shed light on political, social, and ecological issues. WCADC invites local women artists from MD, DC, and VA to create figurative and representational self-portraits using their choice of medium and style in portraying what they want the viewer to comprehend about them. All 2-dimensional artworks will be unframed 24" height x 18" width gallery wrap canvas drawing, painting, mounted photography, and/or mixed media, with ready-to-be-hung wire hardware.

www.wcadc.org

CALL FOR ART



ENTRY DEADLINE May 30, 2023

MY PERSONAL BEST

Perhaps you have a command of rendering in a realistic manner, or maybe you handle abstracts like the masters. This is an opportunity to showcase your "personal best".



Artwork by Juror: Sandra Davis

<p>WHEN July 24 - August 19</p> <p>WHERE Friendship Gallery 4433 S. Park Ave. Chevy Chase, MD 20815</p>	<p>WHO WCADC Members Only</p> <p>HOW \$20 entry fee Submit 1 - 3 pieces with 1 piece guaranteed inclusion Visit EntryThingy.com</p>
---	--

OPEN CALL

SOLO EXHIBITIONS

GIRLS WHO PAINT GALLERY

entrythingy.com
 Open Calls | Girls Who Paint
www.wcadc.org



Announcements

SHARE

<https://www.wcad.org/scholarship>

Visual Arts Scholarship

NEW DEADLINE: April 30th, 2023

IMPORTANT!



OUR VOICES CARRY WEIGHT (RECEPTION)

